



## February 2023 - PKGT Monitoring Summary Report

The following Port Kembla Grain Terminal (PKGT) monthly monitoring summary report has been prepared by GrainCorp in accordance with Section 66 of the *Pollution of the Environment Operations Act 1997*. Monitoring data shared with the public on the website includes that collected as part of the Environmental Protection Licence (EPL) for the Port Kembla Grain Terminal Site. Monthly monitoring summaries are completed on the last day of any given month for the data collected.

### Report contents

**Section A.** Map of PKGT and the location of sampling points as per the Environmental Protection Licence

**Section B.** PKGT fumigation emissions monitoring (Sampling Points 3,4,5,6,7 and 8)

**Section C.** PKGT interceptor water monitoring (Sampling Point 1)

**Section D.** PKGT diesel boiler monitoring (Sampling Point 2)

<b>Monitoring triggered in this period and summarised in report?</b>	<input checked="" type="checkbox"/> Yes see Section B	<input type="checkbox"/> No has not been included in report
	<input checked="" type="checkbox"/> Yes see Section C	<input type="checkbox"/> No has not been included in report
	<input type="checkbox"/> Yes see Section D	<input checked="" type="checkbox"/> No has not been included in report

### Site details

<b>EPL Number</b>	3693
<b>Licensee Name</b>	GrainCorp Operations Limited
<b>Address</b>	Port Kembla Grain Terminal, Morton Way, Port Kembla NSW 2505
<b>EPL Public Register Link</b>	<a href="http://www.epa.nsw.gov.au/prpoeoapp/Detail.aspx?instid=3693&amp;id=3693&amp;option=licence&amp;searchrange=licence&amp;range=POEO licence&amp;prp=no&amp;status=Issued">http://www.epa.nsw.gov.au/prpoeoapp/Detail.aspx?instid=3693&amp;id=3693&amp;option=licence&amp;searchrange=licence&amp;range=POEO licence&amp;prp=no&amp;status=Issued</a>

### Technical Reviewer

A. Costa

Name

17/03/2023

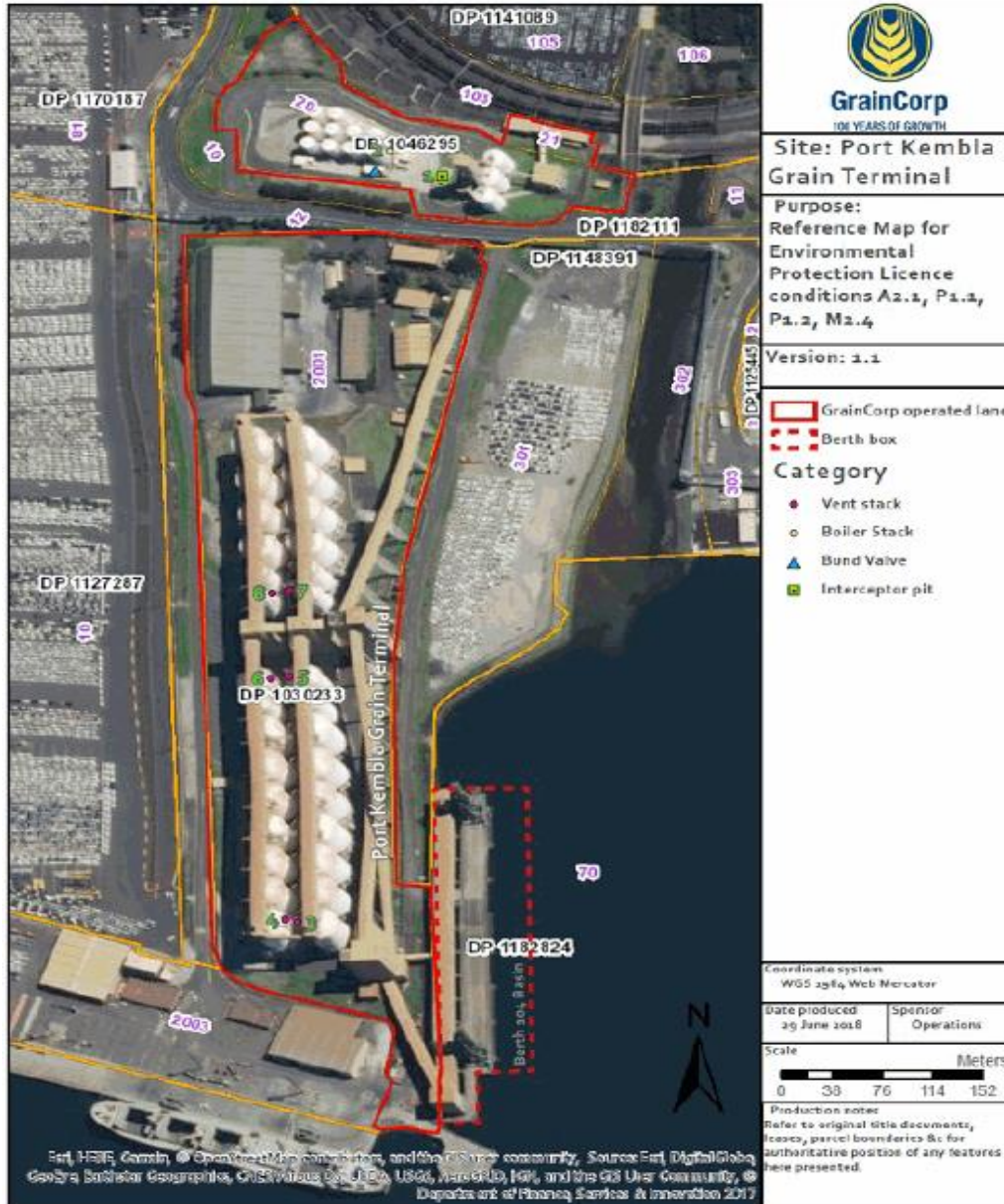
Date

### Date published to website

20/03/2023

Date

## A. Sampling points as per EPL - Port Kembla Grain Terminal



### Environment Protection licence (EPL) Monitoring Locations

Point	Location at PKGT
1	Located at the Bulk Liquid Storage area of the Port Kembla Grain Terminal. The water sample is collected downstream the bund valve from the final section of the interceptor.
2	Diesel boiler air vent located within the bulk liquid storage area directly east of the bulk storage tank area bund.
3 and 4	Most southern fumigation vents located beside silos A1 and B1.
5 and 6	Fumigation vent located in the centre of the site beside silos A9 and B9.
7 and 8	The northern most fumigation vents located beside silos A10 and B10, just north of points 5 and 6.

#

### B. GrainCorp - Port Kembla Fumigation monitoring data summary: February 2023

All air monitoring has been conducted in accordance with the methodology prescribed or a methodology approved in writing with NSW EPA.

Monitoring frequency: Continuous during every ventilation

No. of ventilation events during month: 11

Sampling date (ventilation event)	Pollutant (discharged to air)	Silo Vent No.	Initial Purge start time^A	Initial Purge end time*	Exceedance	Sampler (fumigator)	Parameter	Result		Limit	Units of measure	Monitoring point location	Exceedance (yes/no)	
					More than one silo vent in initial purge phase?*(yes/no)			Min. value	Max. value	100 percentile (allowable)				
3/02/2023	<i>Single silo ventilation event</i>													
	Methyl Bromide	B5	13:48	n/a	no	R. Newton	Concentration	NA	6.0662	8	grams per second	6	no	
							Velocity	1.55	NA	1.4	metres per second		no	
	<i>Second silo ventilation event</i>													
	No discharge occurred							Concentration	NA		-	grams per second	-	
								Velocity		NA	-	metres per second		
1/02/2023	<i>Single silo ventilation event</i>													
	Methyl Bromide	B6	11:41	n/a	No	R. Newton	Concentration	NA	4.9246	8	grams per second	6	no	
							Velocity	1.56	NA	1.4	metres per second		no	
	<i>Second silo ventilation event</i>													
	No discharge occurred							Concentration	NA		-	grams per second	-	
								Velocity		NA	-	metres per second		
6/02/2023	<i>Single silo ventilation event</i>													
	Methyl Bromide	A8	15:10	n/a	no	R. Newton	Concentration	NA	3.525	8	grams per second	5	no	
							Velocity	1.56	NA	1.4	metres per second		no	
	<i>Second silo ventilation event</i>													
	No discharge occurred							Concentration	NA		-	grams per second	-	
								Velocity		NA	-	metres per second		
8/02/2023	<i>Single silo ventilation event</i>													
	Methyl Bromide	B4	14:40	n/a	No	R. Newton	Concentration	NA	5.3014	8	grams per second	6	no	
							Velocity	1.54	NA	1.4	metres per second		no	
	<i>Second silo ventilation event</i>													
	No discharge occurred							Concentration	NA		-	grams per second	-	
								Velocity		NA	-	metres per second		

### B. GrainCorp - Port Kembla Fumigation monitoring data summary: February 2023

All air monitoring has been conducted in accordance with the methodology prescribed or a methodology approved in writing with NSW EPA.

Monitoring frequency: Continuous during every ventilation

No. of ventilation events during month: 11

Sampling date (ventilation event)	Pollutant (discharged to air)	Silo Vent No.	Initial Purge start time <sup>A</sup>	Initial Purge end time*	Exceedance	Sampler (fumigator)	Parameter	Result		Limit	Units of measure	Monitoring point location	Exceedance (yes/no)
					More than one silo vent in initial purge phase?*(yes/no)			Min. value	Max. value	100 percentile (allowable)			
11/02/2023	<i>Single silo ventilation event</i>												
	Methyl Bromide	B12	11:09	n/a	no	R. Newton	Concentration	NA	5.2412	8	grams per second	8	no
							Velocity	1.54	NA	1.4	metres per second		no
	<i>Second silo ventilation event</i>												
No discharge occurred							Concentration	NA		-	grams per second	-	
							Velocity		NA	-	metres per second		
14/02/2023	<i>Single silo ventilation event</i>												
	Methyl Bromide	A11	14:25	n/a	No	R. Newton	Concentration	NA	4.7173	8	grams per second	7	no
							Velocity	1.54	NA	1.4	metres per second		no
	<i>Second silo ventilation event</i>												
No discharge occurred							Concentration	NA		-	grams per second	-	
							Velocity		NA	-	metres per second		
13/02/2023	<i>Single silo ventilation event</i>												
	Phosphine	B15	17:31	n/a	no	R. Newton	Concentration	NA	0.036	0.0424	grams per second	8	no
							Velocity	0.65	NA	0.5	metres per second		no
	<i>Second silo ventilation event</i>												
No discharge occurred							Concentration	NA		-	grams per second	-	
							Velocity		NA	-	metres per second		
23/02/2023	<i>Single silo ventilation event</i>												
	Methyl Bromide	B12	9:35	n/a	No	R. Newton	Concentration	NA	6.0042	8	grams per second	8	no
							Velocity	1.55	NA	1.4	metres per second		no
	<i>Second silo ventilation event</i>												
No discharge occurred							Concentration	NA		-	grams per second	-	
							Velocity		NA	-	metres per second		

### B. GrainCorp - Port Kembla Fumigation monitoring data summary: February 2023

All air monitoring has been conducted in accordance with the methodology prescribed or a methodology approved in writing with NSW EPA.

Monitoring frequency: Continuous during every ventilation

No. of ventilation events during month: 11

Sampling date (ventilation event)	Pollutant (discharged to air)	Silo Vent No.	Initial Purge start time^A	Initial Purge end time*	Exceedance	Sampler (fumigator)	Parameter	Result		Limit	Units of measure	Monitoring point location	Exceedance (yes/no)
					More than one silo vent in initial purge phase?*(yes/no)			Min. value	Max. value	100 percentile (allowable)			
25/02/2023	<i>Single silo ventilation event</i>												
	Methyl Bromide	A6	11:01	n/a	No	R. Newton	Concentration	NA	6.2742	8	grams per second	5	no
							Velocity	1.54	NA	1.4	metres per second		no
	<i>Second silo ventilation event</i>												
No discharge occurred							Concentration	NA		-	grams per second	-	
							Velocity		NA	-	metres per second		
18/02/2023	<i>Single silo ventilation event</i>												
	Methyl Bromide	A5	12:20	n/a	no	R. Newton	Concentration	NA	5.754	8	grams per second	5	no
							Velocity	1.53	NA	1.4	metres per second		no
	<i>Second silo ventilation event</i>												
No discharge occurred							Concentration	NA		-	grams per second	-	
							Velocity		NA	-	metres per second		
27/02/2023	<i>Single silo ventilation event</i>												
	Methyl Bromide	B3	15:15	n/a	No	R. Newton	Concentration	NA	6.0688	8	grams per second	6	no
							Velocity	1.56	NA	1.4	metres per second		no
	<i>Second silo ventilation event</i>												
No discharge occurred							Concentration	NA		-	grams per second	-	
							Velocity		NA	-	metres per second		

### C. GrainCorp - Port Kembla water monitoring data summary: February 2023

The concentration of each pollutant specified below has been determined using the required sampling method, units of measure and sample frequency specified in the EPL. Water parameters and water samples are collected by suitably qualified staff and, where required, water samples are analysed at a NATA accredited laboratory.

**Monitoring frequency:** Single sample each day during any discharge (i.e. daily)

**Number of water release events during month:** 3

**Monitoring Point Location:** Point 1

Number of times measured/sampled during month	Pollutant (discharge to water)	Result			Limit	Units of measure	Exceedance (yes/no)
		Min. value	Max. value	Visible or not visible?	100 percentile (allowable)		
3	Oil and Grease	NA	NA	Not visible	Not visible	Visible	no
	pH	7.73	7.91	NA	6.5-8.5	pH	no
	Total suspended solids	<5	<5		50	mg/L	no
	Turbidity	1.38	4.32		40	NTU	no

Sampling Event details			
Sampling date	Sampler	Lab report date	Lab report ID
9/02/2023	B Loke	13/02/2023	EW2300650
13/02/2023	B Loke	20/02/2023	EW2300726
14/02/2023	B Loke	23/02/2023	EW2300857

Unit of Measure Abbreviation	Unit of Measure
mg/L	milligrams per litre
pH	pH
Visible	Visible
NTU	nephelometric turbidity units